



Next Meeting:

April 12

Doors are open at 6:45pm

Meeting starts at 7:30pm

MIFO Centre, 6600
Carrière St, Orleans.

Program:

**Mary Pal, Almonte,
Ontario. "Getting from
here to There"**

Shop of the Month:

Mad About Patchwork

Fat Quarter Theme:

Spring Florals



PO Box 62022
RPO Convent Glen
Orleans, ON
K1C 7H8

The Common Thread QUILT GUILD

President's Message

Yes! Spring is finally here!

The activity level in our backyard trees and hedges has risen, it is one of the many signs that spring is finally here! Already the birds busy gathering anything to build their nests. Last year, I had attached to the top of a tomato stake a bunch of fabric strips to keep them handy and tie my plants. To my surprise, birds were happy with to pull out some for their nests. So this year, I'll help them by having loose strips of colorful fabric scraps for their use.

I too am getting busy in my quilting nest. I want to finish a wall hanging for the show and I need some ideas as to how I'll quilt it. I find myself doodling and searching the internet for inspiration. But I can't waste too much time as the quilt show is only a month away!

Chantale Richard



The excitement is starting to build up for the busy quilt show week end and so many things need to be done before! We still need several volunteers to make that weekend a success, so don't hesitate and jump in the fun and excitement of this year's "Sew full of love" quilt show.



Inside this issue:

Presidents Message	1
Guild Retreats	2
Workshops	3
Notice	4
Announcement	5
Quilt show update	6
Program	7
Library	8
Canada 150	10
Inches Update	11
Member's Boutique	13
CTQG Quilt Show	14
Upcoming Events	15

Reminders

May Newsletter
Deadline: April 25, 2016

Send to:

newsletter-edit@commonthread.on.ca



COMMON THREAD QUILT GUILD

Guild Retreats

The spring retreats are full, if you would like to add your name to the waiting list please register at Guild meetings or by email to retreats@commonthread.on.ca

In town retreats (Notre-Dame-des-Champs on Navan Road)

General Information:

Hours are Friday from 10:00 am till 9:00 pm;

Saturday, from 9:00 am till 9:00 pm and

Sunday from, 9:00 am till 4:00 pm.

Cost is \$80 for guild members and \$95 for non-members and includes meals.

All participants are asked to help with set-up and take down as well as help with one meal serving or clean-up. A sign-up list will be available at the retreat for signing up for meals prep or clean-up.

Lynn Strban and Sherida Giddings

Upcoming In-town Retreat

Dates:

April 22-24, 2016
(full-waiting list only) or

April 29-May 1, 2016
(full-waiting list only)

*If space allows guild members may be able to sign up for a second retreat 1 week prior to retreat dates, please send email to:

retreats@commonthread.on.ca
to check availability.

NAV Centre Retreats

The NAV centre is in Cornwall, retreats hours are from Friday; 6:00 pm till Sunday; 4:00 pm.

Room rate for 2015 was \$292.00 plus hst (single occupancy).

This included dinner on Friday, 3 meals on Saturday and breakfast and lunch on Sunday.

Rooms were paid for by individuals at check-out.

Past Retreats

October 16-18, 2015 and
October 30-November 1, 2015
(In-town).

November 20-22, 2015
(NAV Can Centre)

January 22-24, 2016 and January
29-31, 2016 (In-town)

Sherida and Lynn



Workshops Irene Walker and Susan Campbell

WORKSHOPS 2015-2016

Workshops for this season have taught us new skills and brought me lots of – UFO's! I am happy to report that we have many people in the guild who actually finish projects, though, and it has been delightful to see the products of our workshops on display at Show and Tell at every monthly meeting. Bravo to all of you!

I look forward to April's show and tell (bring and brag, make and take, baste and boast, whatever you call it!).

Be sure to keep your eyes open for many beautiful examples of this project!



106 John Street North
Arnprior, ON K7S 2N6
T 613.623.0500

info@sewinspired.ca
www.sewinspired.ca

Creative Ideas Fabric Pattern Notions Sewing Machines Sewing Classes
Authorized Pfaff Sewing Machine and Serger Dealer



MAPLE LEAF
— Quilting Company Ltd. —

CANADA'S #1 QUILT-BY-MAIL SERVICE

10% OFF ALL ORDERS

ONLINE REDEMPTION CODE:
COMMON10

WWW.MAPLELEAFQUILTINGCOMPANY.COM



- FREE SHIPPING OVER \$100, CANADA POST
- FREE BATTING AND THREAD
- FIXED PRICING BASED ON QUILT SIZE
- ADDITIONAL OPTIONS AVAILABLE
- EASY TO USE WEBSITE

COUPON FOR USE ONLINE ONLY. NOT COMBINABLE WITH ANY OTHER OFFER. OFFER EXPIRES JULY 31, 2016. LIMIT 1/CUST.

CTQG Sew—Day Notice Catherine Patterson and Kirstin Fearon**Another Sew-Day to work on projects for the quilt show?**

Yes please!

Who: Common Thread Quilt Guild members (if space allows, and guests)

What: Are you in need of dedicated time to quilt and get ready for the quilt show? Do you like the guild retreats and would like to experience a similar day long event? We will provide you with a great sized table, chair, irons, ironing boards, cutting mats & a GO cutter. Kettle, Tea and microwave also available. If more than 10 people, prizes will be available.

***Please bring your own meals and drinks. If you use any dishes, I do ask that you clean up after yourself.**

When: March 26th - 9AM to 9PM and April 16th 9AM to 9PM

Where: Notre Dame des Champs community hall at 3659 Navan Rd (where we host workshops and retreats)

Why: A sew day to yourself with your friends; yes please! At a low cost of \$10 for the day, how can you lose!

If you would like to sign-up for either or both of the sew days, please email kirstinfearon@gmail.com.

Happy quilting!





Volunteers Needed

Volunteers are required to fill the roles of Vice President and Secretary on the CTQG Executive Committee starting in June 2016. These are rewarding positions that would require only a few hours of your time each month.

The Executive Committee meets monthly and addresses a variety of issues important to all CTQG members.

As a member of the Executive you could make your voice heard on important Guild activities such as Workshops, Program, Retreats, Library, Membership and more. We're looking for members who want to help shape the future direction of our Guild.

If you're interested in either of these positions please contact our current Vice President, Tammy Davies at davies.ottawa@gmail.com or speak to her at the March Guild meeting.

TAYLOR SEWING QUILT SHOP

The friendly quilt shop where you'll always bump into your friends. Come on in for advice, classes, patterns, fabrics, Monks cloth, books, notions, batting and sew much more!

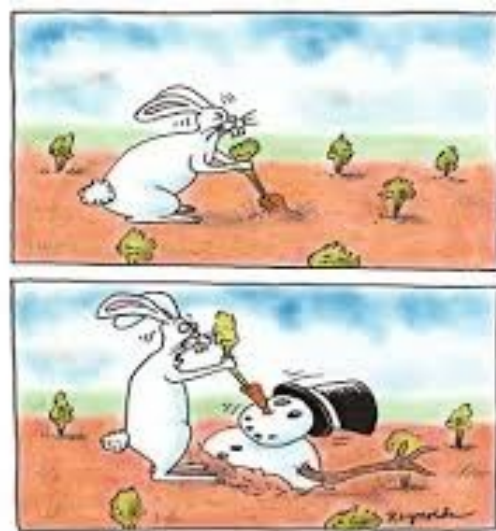
JANOME

Mon-Fri 9-5, Sat 9-4

PFAFF

7712 Kent Blvd, Brockville 613-342-3153

www.taylorsewing.com



OTTAWA SEWING CENTRE
SALES & SERVICE

Sales & Service, Parts & Notions,
Sewing & Quilting Machines Sergers/Overlock,
Steam Presses & Cabinets, Embroidery Machines
Service to all Makes & Models
Authorized dealer for Brother, Singer and Juki.



If you've ever dreamed of making incredible quilts and fashion-forward creations, shop at Ottawa Sewing Centre

#104B - 1390 Clyde Ave, Ottawa ON K2G 2H9
613-695-1386 info@ottawasewing.com

Store Hours: 10:00 – 6:00 Monday – Friday
10:00 – 5:00 Saturday
Anytime at www.ottawasewing.com

2016 QUILT SHOW UPDATE — VOLUNTEERS, IT'S TIME TO SIGN UP!

Wahoo! Only 1 months until our Quilt Show. I know everyone is busy; cutting, sewing, snipping, reverse sewing, pressing and finishing (OK, I suspect there are some just starting) their quilts to put in the Show. **Reminder; Quilt registration deadline is 12 April, 2016.** Your quilt does not need to be completely finished by that time, just enough to take a recognizable photo for registration.

To ensure our guild puts on a Great show again this year May 6,7 & 8 (Mother's Day weekend) we need you to take a moment to check your schedule to see where you can lend a hand and work a shift (2hrs) or more? The sign-up posters will be at the April and May meetings or you can send Janice an email via the quilt show link (CTQG web site).

Types of Volunteer Opportunities

- **White Glove Ambassadors:** You stroll through the quilt display area, helping the visitors view the quilts, answer questions, hand out programmes, chat with folks and generally be a smiling face from our Guild.
- **Admissions:** Selling entrance tickets, stamping hands and being your helpful selves.
- **Security:** Monitoring one of three emergency exits for illicit activity (i.e. keep the quilts from walking out!). This is a sitting or standing shift.
- **Members Boutique:** Selling quilt items that our own members have for sale.
- **Set-Up:** Thursday, May 5, 1pm-4pm. This is all about hanging the quilts up. If you can you hang a curtain, you can hang a quilt (even my husband can do this one). If you can bring a ladder or another buddy (partner, offspring)? All help is appreciated and the more we have the easier & faster the job goes.
- **Tear-Down:** Sunday 4pm-6pm. The quilts get taken down, bagged up and handed back to the quilters. There is a wide variety of tasks from climbing a ladder to sitting, so everyone can help. Once again, the more hands we have for this task the faster it goes.

Why Volunteer? We need you, its fun, you meet other quilters, you get to see what goes on behind the scenes and you get **free admission** to the Quilt Show the day you volunteer! Set-up volunteers get to pick their free day! So pick a day, pick a shift and sign up, come on out to the Quilt Show. Help us make this a successful Show for everyone! The old adage is so true "many hands make light work".

Thank you and see you at the Quilt Show Table.

Janice Namiesniowski, Quilt Show Volunteer Coordinator

Program Linda Won

My Quilt Journey

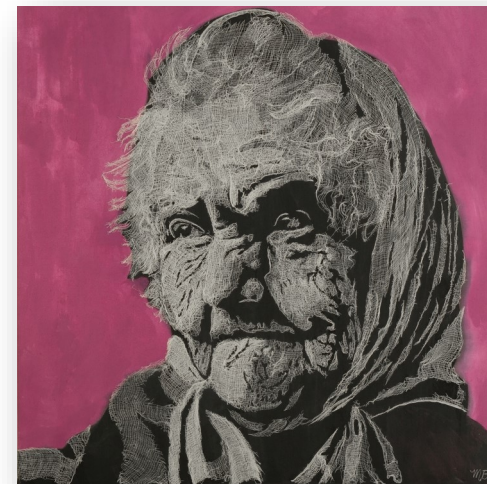
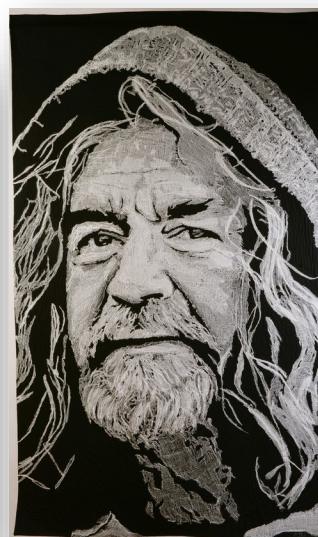
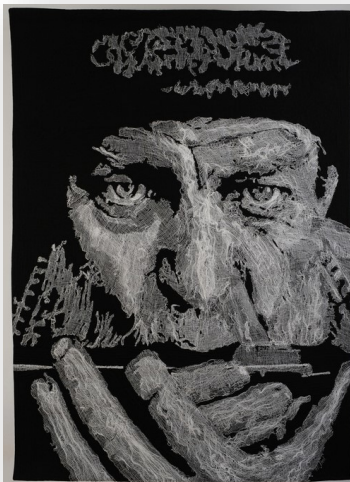
Speaker: Mary Pal, “**Getting From Here to There**” by Jen”, Mary Pal, Almonte, Ontario



Mary Pal is a Canadian fibre artist known for her cheesecloth portraits. Her work has been exhibited and collected throughout the world, published in several books, and has been featured in *Quilting Arts Magazine* and on *Quilting Arts TV*. She is a feature artist in *Art Quilt Portfolio: People & Portraits* published by Lark Books.

A teacher for over 35 years, she loves to share her knowledge and skills with her students and make a difficult technique or concept easy to learn. A past Director on the Board of Studio Art Quilt Associates, Mary is an enthusiastic promoter of the growing fibre art movement.

At our April meeting, Mary Pal will provide us with insight on how you translate an image or an idea into a finished work of fibre art. Her presentation examines image manipulation, methods of depicting imagery on fabric, finishing options and guidelines for effective studio practice for all levels of quilt artist.



Advertisers

[Flair with Fabrics](#)

[Fran O'Neill](#)

[Les Ateliers Quilt et Coton](#)

[MadAboutPatchwork](#)

[Maple Leaf Quilting Company](#)

[Michèle Gagné Quilting](#)

[Ottawa Sewing Centre](#)

[Ottawa Valley Fabric.com](#)

[Pauline Clark](#)

[Phyllis Home Decor](#)

[Quilty Pleasures](#)

[Sew Crafty](#)

[Sew Inspired](#)

[Taylor Sewing Centre](#)

[Textile Traditions](#)

[The Pickle Dish](#)

[The Quilting Quarters](#)

Advertising Space Available

Business Card = \$8 / month
(3½" x 2" or 2" x 3½")

¼ page = \$16 / month
(4⅞" x 3½")

½ page = \$30 / month
(4⅞" x 7¼" or 8½" x 3½")

Full page = \$55 / month
(8½" x 7¼")

Contact

newsletter-bill@commonthread.on.ca

Library Liz Villeneuve

May is inventory month. Please make sure you have returned all items by the May meeting. No items can be borrowed in May but if you have a valid membership for 2016-2017 you may borrow items at the June meeting and keep them until September. I need volunteers for inventory which will take place from 6 pm until 7:30 pm before the May meeting. Many hands will make short work of this task.

If you can help, please e-mail me at library@commonthread.on.ca or see me in the library before the April meeting.

We have two new books this month. Teach Me to Sew Triangles (715) by Pat Sloan has 13 easy techniques for cutting and assembling triangles into blocks along with 12 patterns. Some have a modern look and some are quite traditional. Half square triangle units can be made two, four or eight at a time. Also included are methods for quarter square triangles, flying geese and equilateral triangles. I particularly like the Triangle Tricks Cheat Sheet which gives the formulas for cutting your fabric.

Striking Strip Quilts (716) by Kate Henderson has quilts made from 2 1/2 inch strips. There are tips for collecting these strips from leftovers and your stash or you can use precuts. The 16 quilt patterns have lots of colour contrast and a modern feel. You could make the patterns quite scrappy or use just a few fabrics.

You can reserve these books by e-mailing me at the above address or by in person in the reservation book which I have available in the library. Look under activities on the website to see the inventory.

See you in April.

Liz



Frances O'Neill
Quilter

Fran's Quilting Services

Workshops, Commissions, Private Instructions, Patterns

BY APPOINTMENT ONLY

60 Sparrow Way
Ottawa, Ontario
Canada K1V 9H5

Tel: (613) 733-7865
E-mail: franquilts@rogers.com
Website: www.fransquilting.com

Please contact to receive emails on Uncoming Classes.

Mad about PATCHWORK

modern. fresh. fun. fabric.

shop online 24/7

or

visit the loft and sewing studio

2477 Huntley Road Stittsville

613 838 0020



MEMORY QUILT



SISTERHOOD of QUILTERS BLESSING

May your treasured

Fat Quarters

Be colourful, plentiful,

And overflowing;

May your

stiches in the Ditch

Be even and straights;

And may you always

Be comforted

By the warmth

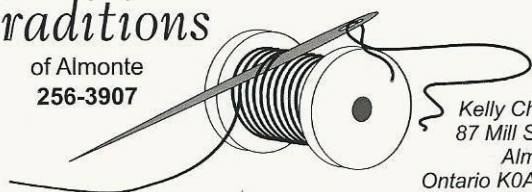
And joy of a handmade

QUILT

for your quilting, sewing, knitting
& embroidery needs, it's

Textile Traditions

of Almonte
256-3907



Kelly Church
87 Mill Street
Almonte
Ontario K0A 1A0

MOVED TO A NEW LOCATION

Michèle Gagné Quilting

Longarm Machine Quilting

& Quilt Finishing Services

613-558-4125

2695 Bouvier Road

Hammond ON K0A 2A0

Embroidered Custom Labels,
Binding, Lectures & Workshops
Bilingual Service

**Community Projects
Outreach Recipients:**

**Ottawa General Hospital
Cuddle Quilts: 22" x 22"**

**Ronald McDonald House,
Ottawa: 40" x 60" or
smaller.**

CHEO Dialysis: 40" x 60"

**Eastern Ottawa Resource
Centre, Orleans: 40" x 60"**

**Interval House, Ottawa:
any size**

**The Infant and Child
Development Program of
Algoma Public Health,
Ontario: 40" x 50"**

**Chernobyl, Europe: any
size**

**Cornerstone Housing for
Women, Ottawa; 40" x
60" or larger**

COMMON THREAD QUILT GUILD



Canada's turning 150!

Our guild has decided to celebrate Canada's 150th by doing what we do best – creating a quilt!

We want you, our members, to design and make a 4.5 x 6.5 inch (finish 4 x 6 inch) block that represents what Canada means to you. Your block can be a vertical or horizontal orientation. Use any technique you like to complete your block.

We will have a table to accept your entries at the guild meetings. The deadline to contribute is October 2016. We'll then put them together to create what should be a very meaningful quilt to all of us. We hope the finished quilt will be part of an exhibit that will travel from quilt show to quilt show in 2017.



Lacrosse, our national summer sport, has been played by Aboriginal peoples for close to a thousand years. Hockey, our national winter sport, was invented in Canada in the 1800s, and basketball was invented by Canadian Dr. James Naismith in 1891 to condition young athletes during the winter. Today, soccer is the most popular sport among Canadian children.

Directors of the Common Thread Quilt Guild

President: Chantale Richard

Vice-President: Tammy Davies

Secretary: Danielle Butt

Treasurer: Kathryn Barr

Past-President: Carole Maisonneuve

Programs: Linda Won and
Shirley MacFadden-Geiger

Quilt Show Coordinator: Kirstin Fearon

Standing Committee Heads

Retreats:
Lynn Strban and Sherida Giddings

Membership:
Lyse Potvin / Pam Simons

Workshops:
Irene Walker and Susan Campbell

Community Projects:
Catherine Parkinson

Library:
Liz Villeneuve

Newsletter:
Ann-Louise Masek and Diane Greer

Website:
Catherine Patterson

Shop of the Month:
Catherine Patterson

Challenge:
Tammy Davies

Fat Quarters :
Del Jazey and Susan Baker

WE ARE COUNTING INCHES AGAIN! The CQA needs our help!

We are crazy enough to do it again! Will you join us?

We are counting our inches from Quilt Canada 2015 to Quilt Canada 2016 and are a little late getting started. We really need your help!



The Canadian Quilters' Association is travelling from Quilt Canada 2015 - Lethbridge AB to Quilt Canada 2016 - Toronto, ON. The journey is 3,627 km or a whopping 142,805,299 inches!

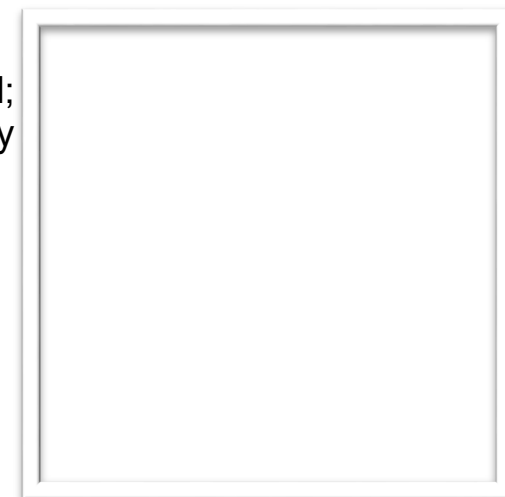
We can help them get there by measuring the inches around the perimeter of the quilts we display at Bring and Brag. We'll submit the number of inches to CQA after each meeting, and see how quickly we can travel!

The total inches for the February meeting was *11,961 inches or .3 km*.

This made up of 5976 inches for charity quilts and 5985 inches for bring and brag pieces.

Many thanks to all the members who had pre-measured; more than happy to accept your bits of paper rather than try to measure every single piece.

This bring our running total to 1.264 kms, which happens to be the exact distance from MIFO to Fabricland.



Phyllis' Home Decor

Home Decor Sewing
Custom Quilts
Longarm Quilting

1727, des Pometiers
Pincourt, Qc
J7W 0A5

514-425-0775
phyllis.moody@sympatico.ca
www.phyllishomedecor.com

Phyllis Moody
Authorized Gammill Representative

**Pauline Clarke**

Computerized Long Arm Quilting
Quilt Restoration & Memory Quilts
Canada's Initial Glide Thread Distributor

613-866-2992



email: pauline@3dogsquilting.ca



www.3dogsquilting.ca



**PFAFF
JANOME**
Authorized Dealer

Ottawa's largest quilt shop, where the service is small-town friendly. Located in the heart of old Orleans, Quilty Pleasures offers a full range of supplies and inspiration for the creative quilter.

Fabric
Notions
Classes
Sewing Machine
Sales & Service

2211 St. Joseph Blvd
Orleans, Ontario
K1C 7C5
613-834-3044
info@quiltypleasures.ca
www.quiltypleasures.ca



Val and Leslie, Owners



Information pertaining to the “Member’s Boutique that we will have during the quilt show.

Hi Everyone,

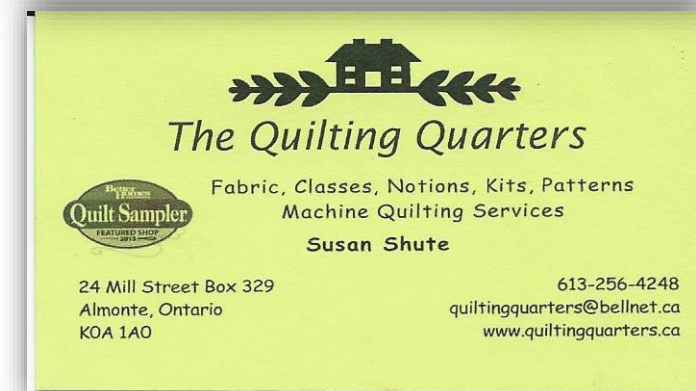
As you all know our Quilt Show Co-ordinator, Kirstin Fearon, has announced that we will be having a “Members’ Boutique” at our quilt show.

What does this mean? It means that should you have quilted items you wish to sell, then the Members’ Boutique will be there for that. There is no cost to the member to put something for sale. There will be a ‘registration process’ in order to ensure we keep tabs on who submitted items for sale, amounts, and all the pertinent details.

So be sure to join us at the March 2016 guild meeting for additional details!

Carole Maisonneuve / Judy Loree

Members’ Boutique Coordinators/Registrars



CTQG Quilt Show 2016

Kirstin Fearon, Coordinator



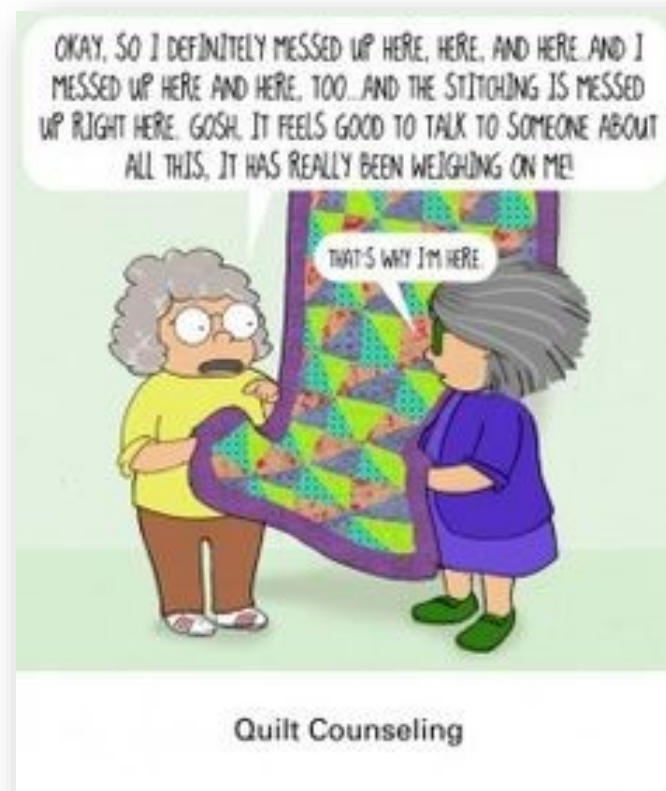
Our Quilt show, Sew Full of Love, is upon us. The team has been planning a great event. From the merchant mall, to the Modern Quilt Guild joining us to the static display and community quilts. But most important, I cannot wait to see all of your lovely quilts that will be on display this year. We have lots of space and lots of room for your quilts. April's meeting is the deadline to register your items for the show.

To register, simply save a copy of the form from the website and send it in- to showreg@commonthread.on.ca -- be sure to use this email address as the one on the form is incorrect. At guild, be sure to pick up your drop off forms and plastic bags. We will have the drop off locations listed at the quilt show table.

Also at April's meeting, you will be able to sign up for a volunteer shift or two. This is a great opportunity to help out the guild but also see the show at no charge.

Be sure to see Carole at the member's boutique; your participation determines if we host the space.

Thank you and see you at guild!



Fabric - Notions - Ribbon & Lace - Yarn - Crafts
Quilting & Needlework Supplies - Classes
Janome Sewing Machines

Sew Crafty

1068 Rideau Ferry Rd
Rideau Ferry, Ont
K0G-1W0
(613) 264-1547

www.sewcrafty.ca

Flair With Fabrics

613-448-9032

3 King St., Chesterville ON K0C 1H0

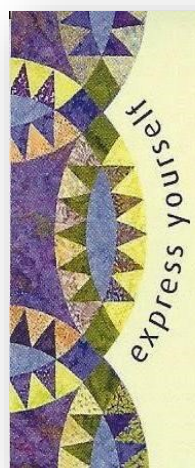
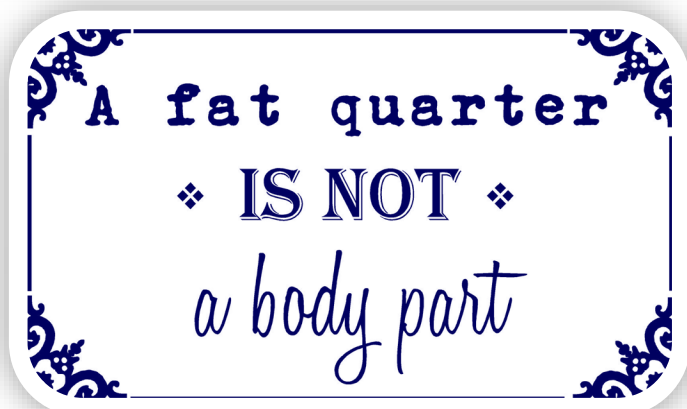
rliscumb@gmail.com www.flairwithfabrics.com

Specializing in 100% cotton quilting fabrics, flannels,
108" backings, yarn, supplies, notions & more...

Hours: Mon. - Thurs.: 9 - 5:30

Fri.: 9 - 6 Sat.: 9 - 4

Ruth Liscumb - Owner



The PickleDish
Quilt Shop and Studio

Jan Kittle

613-212-8770

Jan@ThePickleDish.ca

ThePickleDish.ca

113 Bridge St., Carleton Place ON K7C 2V4

The love of quilting is our common thread.

Upcoming Events

April 8-9	Fibre Fling 5—Textile Art Show and Sale	Kitchissippi United Church, Admission \$5.00	630 Island Park Drive, Ottawa
Apr 12	Mary Pal, Almonte, Ontario		
Apr 22-24	In-town Retreat		Notre Dame des Champs
Apr 29-May 1	In-town Retreat		Notre Dame des Champs
May 6-8	Sew in Love Quilt Show		RA Centre
May 10	Annual General Meeting & Quilt Show Results		
May 27-28	D.O.T.S. Quilt Show	Dunnville's Own Tiny Stitchers Admission \$7.00	Dunnville Memorial
June 14	Summer Celebration		